



Aqualitec
Wastewater Treatment Equipment

COMPACTEC
WASHER COMPACTOR

COMPACTEC:

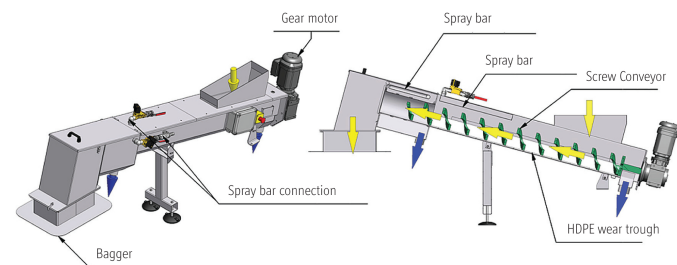
The Washer Compactor that Improves
Sanitary Conditions.

By Aqualitec.



OPERATING MODE:

The captured solids are conveyed by a shaftless auger into the washing zone where they are cleaned and dewatered. The debris are then compressed and discharged, reducing its volume and making it more cost-effective to transport and dispose of. Additionally, the spray bar system allows organic material to be sent back to the system, reducing waste and operating costs. Compactec can be easily retrofitted to any existing bar screen equipment.



Aqualitec Corp. - 3415 S,
Sepulveda Blvd, Suite 1100,
Los Angeles, CA 90034



Tel, 1-855-650-2214,
info@aqualitec.com



www.aqualitec.com



Aqualitec
Wastewater Treatment Equipment

COMPACTEC
WASHER COMPACTOR

FEATURES & BENEFITS

1. Drive Mechanism



The transport mechanism of the Compactec system utilizes a shaftless auger constructed from alloy steel and coated with protective polyurethane paint. The transport tube, with a minimum width of 7" and a thickness of ¼", is made of either 304L or 316L stainless steel. In addition, the transport tube is covered with high-density polyethylene (HDPE) liner, which helps to ensure the system's durability and longevity.

2. Spray Bar System, Maximum Organics Back In The Process



To enhance the removal of organic material from debris and reintroduce it back into the wastewater process, the Spray Bar System features two spray bars equipped with a combined 4" drain. One spray bar is located on the conveyor, while the other is situated to spray into the compression box. This dual configuration maximizes the amount of organic material that can be effectively captured and returned to the WTP process.

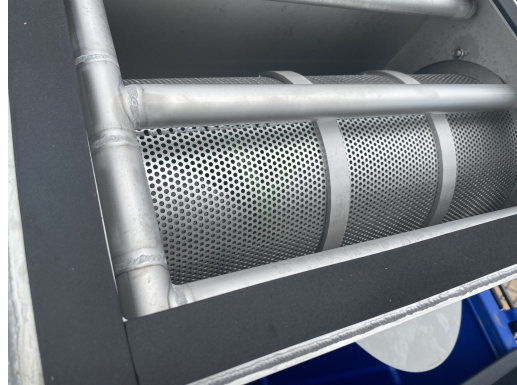


Aqualitec
Wastewater Treatment Equipment

COMPACTEC
WASHER COMPACTOR

FEATURES & BENEFITS

3. Volume Reduction



In the Compactec system, the screw applies pressure to the debris, pushing it against the variable-pressure lid. As this happens, the screened material is effectively dewatered and compressed. To meet landfill regulations and Paint Filter Test requirements, the pressure of the lid can be easily adjusted as needed.

4. Odor Control



All Aqualitec bar screens are completely enclosed, and Compactec's bagger system further controls odor.

PERFORMANCES

Dry solid concentration greater than 30%

Volume reduction greater than 30 %

Capacity: 0 to 9.500gallon/day (0 to 1,5m³/h) of compacted waste

DESIGN GUIDELINES

Compactec is customized based on specifications and/or structural constraints. Below are some guidelines of the design requirements.

MATERIALS

304 or 316 stainless steel

REQUIREMENTS - FOOTPRINT

Installation angle: 0° to 25°

Drain connection 4"

Water: Between 2 and 20 gal per hour - 72psi min.

Water: Non potable but clean water

MOTOR CHARACTERISTICS

Absorbed power: 3/4hp (0.56 KW)

Voltage: Custom to site - 3 phases

Frequency: 60 Hz



Clearlake Oaks - California



Aqualitec Corp. - 3415 S,
Sepulveda Blvd, Suite 1100,
Los Angeles, CA 90034



Tel, 1-855-650-2214,
info@aqualitec.com



www.aqualitec.com